



VULCANIC S.A. - 48, rue Louis Ampère  
Zone Industrielle des Chanoux - F 93330 NEUILLY / MARNE (France)  
Tél. (33) 01.49.44.49.20 - Fax (33) 01.49.44.49.41



## OWNER'S MANUAL

### TYPE 6006

### SELF-REGULATING CABINET HEATERS

#### 1 - USE :

Heating electrical cabinets and cupboards, to prevent them freezing or to keep out dampness.

#### 2 - DESCRIPTION :

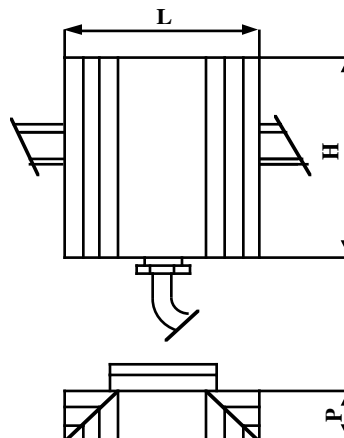
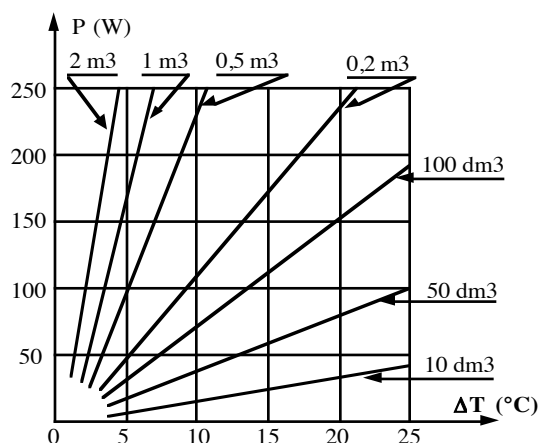
- Power: from 20 to 250 Watts, depending on the model.
- Voltage: 230 volts single-phase for the standard models referred to.
- Appliance snaps home on a 35 mm symmetrical DIN rail, and comes with aluminium housing and fins.
- IP 30 or IP 55 protection, depending on model.
- Output via 0.75 mm<sup>2</sup> cable, 0.3 m long (2 wires + earth).
- Safety thermostat built in (except for non-standard references 6006-60 and 6006-80, and for certain special appliances) to limit the surface temperature of the appliance to 70°C. The ambient temperature of the cupboard or cabinet has to be controlled by a separate regulation system.

#### STANDARD MODELS

Référence IP 30	Référence IP 55	Power (W)	H (mm)	L (mm)	P (mm)
6006-00	6006-90	20	110	88	37
6006-01	6006-91	50	110	88	37
6006-02	6006-92	100	165	120	64
6006-03	6006-93	250	200	120	64

#### 3 - PRECAUTIONS FOR USE : Check that:

- the supply voltage used is that stated on the heater instruction plate.
- the cabinet or cupboard into which it is to be fitted has a 35 mm symmetrical DIN rail at the desired position.
- avoid proximity to heat-sensitive components (50 mm minimum).
- that sufficient power is installed, given the volume of the cabinet or cupboard and the temperature differential vis-a-vis the outside. The chart below enables this power to be determined (for cabinets made of painted sheet metal, which are protected from the wind, with a K exchange coefficient of 5 cal/h x m<sup>2</sup> x °C) :



#### 4 - **FITTING AND ELECTRICAL CONNECTION :**

##### 4 - 1 - **FITTING :**

- The heater must be fitted vertically, with the connection conductor at the bottom, towards the bottom of the electrical cabinet or cupboard and at least 50 mm away from heat-sensitive appliances. In high-volume cabinets, install several heaters which should be properly distributed.
- Snap the appliance home onto the DIN rail.

##### 4 - 2 - **ELECTRICAL CONNECTION :**

- This is usually to the terminal box of the electrical cabinet or cupboard. Do not omit to connect the ambient temperature regulation system.
- The earth wire (yellow-green) must be wired up to the installation earth.
- Check that all the connections are tight.

#### 5 - **MAINTENANCE :**

5 - 1 - After 50 hours operating: check that all the connections are tight.

5 - 2 - Once a year: same operation as § 5-1. Also check that the fins have not become fouled; clean them if necessary.

5 - 3 - Where the cabinet remains switched off and inoperative for long periods, in an atmosphere with uncontrolled hygrometry : if necessary, heat it for a minimum 4-hour period, in order to dry out the unit and eliminate any dampness which may have been absorbed. Immediately afterwards, measure the insulation in relation to the earth: the value measured at 500 volts direct current must be greater than one megohm.

#### 6 - **GUARANTEE :**

Our guarantee conforms to inter-union electrical construction agreements, and our general terms and conditions of sale.

We cannot be held liable for any deterioration caused by:

- using the appliance above 10% over the nominal voltage intended,
- lack of maintenance, impacts, rough handling or inexperience on the part of the user.