

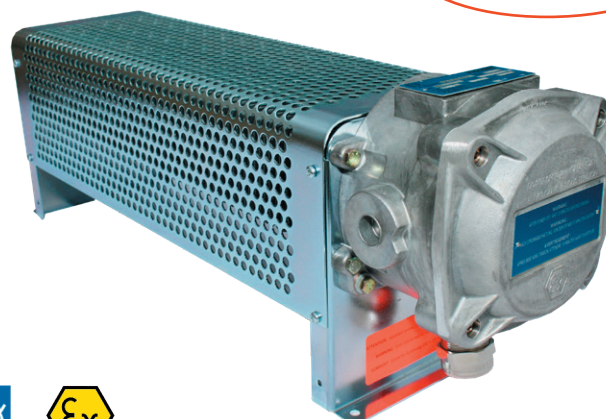
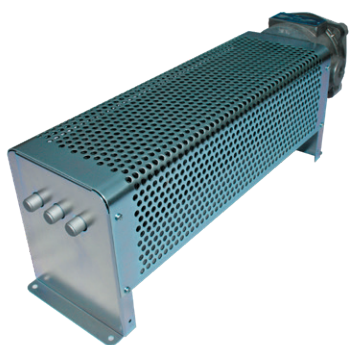
Application

These room radiators for heavy duty use have been designed to provide a reliable heating for industrial and technical premises, paint booth, storage area for flammable chemical products, petrochemical plant, service station, drilling rig, containers. Suitable to every locations that require the use of room radiators both ATEX 2014/34/EU and IECEx certified for hazardous area. Ambient operating temperature: - 20°C up to 40°C, relative humidity max 95%.

Explosion proof equipment of category 2 for surface industries usable in risk areas 1 and 2, in gas environment of group IIC whose temperature of self ignition is higher than 135°C (T4) or 200°C (T3). ATEX Marking : II 2 G Ex d II C T3 (or T4)

Design

Built with a set of heating monotubes protected by a finned pocket. Support and housing are in stainless steel 304L. Explosion proof aluminium junction box IP66 (protection mode «Ex d») with cable gland included. These range of room radiators are fitted with a control thermostat from 0 up to 50°C.



With control thermostat



Recommendations

This range of room radiators must be installed in horizontal position, fastened to the floor or on suitable brackets for wall mounting, without any device preventing a sustainable natural convection. Special precautions must be taken to ensure a safe and appropriate use of this equipment.

Please consult us or read the instruction manual previously.

Manufacturing capabilities

Other Heating power and supply voltage
Ambient temperature : -60 up to + 60°C
EAC Ex certificate for Russia

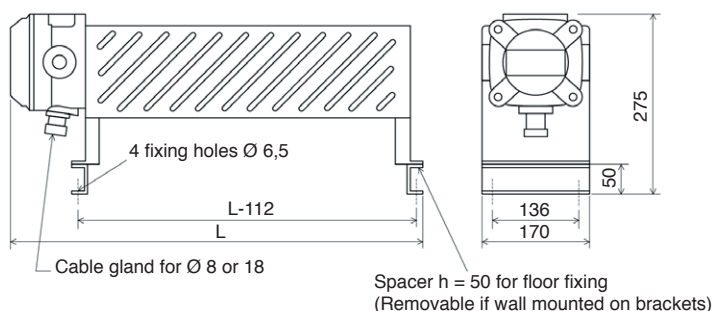
Temperature class T3 - 200°C

Power (+5/-10%)	Reference*			L (mm)	Weight (kg)
	230 V 1P	230 V 3P	400 V 3P		
500 W	6010.55	/	/	612	10
750 W	6010.65	6010.68	6010.62	612	12
1250 W	6010.66	6010.69	6010.63	902	18
2000 W	6010.67	6010.70	6010.64	1187	24

*References depending on the supply voltage of the radiator: 230 V 1P, 230 V 3P or 400 V 3P

Temperature class T4 - 135°C

Power (+5/-10%)	Reference*			L (mm)	Weight (kg)
	230 V 1P	230 V 3P	400 V 3P		
375 W	6010.35	6010.38	6010.72	612	12
650 W	6010.36	6010.39	6010.73	902	18
900 W	6010.37	6010.40	6010.74	1187	24



Accessories

Pair of protected steel brackets for wall mounting.
P/N. 6008-20 (weight 0,9 kg)

