

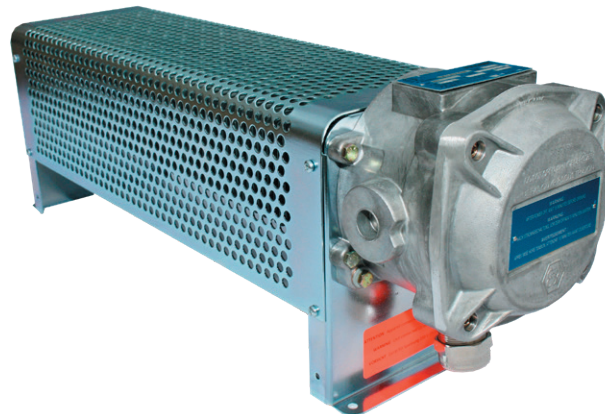
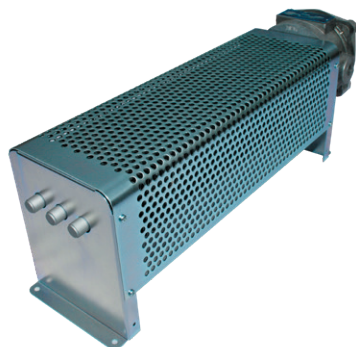
Application

These room radiators for heavy duty use have been designed to provide a reliable heating to industrial and technical premises, paint booth, storage area for flammable chemical products, petrochemical plant, service station, drilling rig, containers. Suitable to every location that require the use of room radiators both ATEX 2014/34/EU and IECEx certified for hazardous area. Ambient operating temperature: - 20°C up to 60°C, relative humidity max 95%.

Explosion proof equipment of category 2 for surface industries usable in risk areas 21 and 22, in dusty environment of group IIIC whose temperature of self-ignition is higher than 195°C. ATEX Marking : II 2 D Ex t III C T₅ 195°C Db IP6X

Design

Set of heating monotubes protected by a finned pocket. Support and housing are in stainless steel 304L. Explosion proof aluminum junction box IP66 (protection mode "Ex d") with ground terminal for equipotential connection with cable gland included. These range of room radiators are supplied without any control thermostat.



Recommendations

This range of room radiators must be installed in horizontal position, fastened to the floor or on suitable brackets for wall mounting, without any device preventing a sustainable natural convection. Special precautions must be taken to ensure a safe and appropriate use of this equipment.

Please consult us or read the instruction manual previously. We advise to use an ATEX control thermostat reference 6023-02 for an optimal control of ambient temperature in the room.

Manufacturing capabilities

Other Heating power and supply voltage.
Temperature class : T₅ 130°C

Accessoires

Pair of protected steel brackets for wall mounting.
P/N. 6008.20 (weight 0,9 kg)

Power (+5/-10%)	Reference *			L (mm)	Weight (kg)
	230 V 1P	230 V 3P	400 V 3P		
465 W	6110.42	6110.52	6110.02	612	12
790 W	6110.43	6110.53	6110.03	902	18
1110 W	6110.45	6110.55	6110.05	1187	24
1675 W	6110.47	6110.57	6110.07	1687	27

*References depending on the supply voltage of the radiator: 230 V mono, 230 V tri or 400 V tri

