

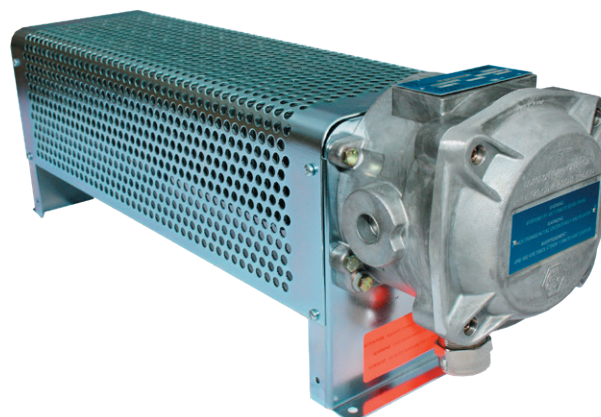
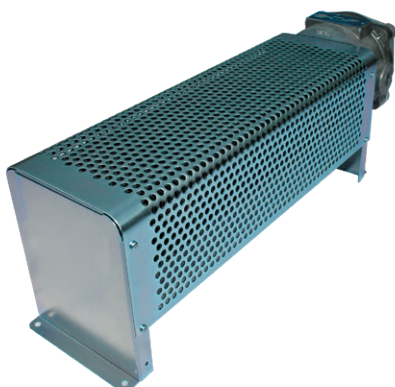
Application

These room radiators for heavy duty use have been designed to provide a reliable heating to industrial and technical premises, paint booth, storage area for flammable chemical products, petrochemical plant, service station, drilling rig, containers. Suitable to every locations that require the use of room radiators both ATEX 2014/34/EU and IECEx certified for hazardous area. Ambient operating temperature: - 20°C up to 40°C, relative humidity max 95%.

Explosion proof equipment of category 2 for surface industries usable in risk areas 1 and 2, in gas environment of group IIC whose temperature of self ignition is higher than 200°C (T3). ATEX Marking : II 2 G Ex d II C T3.

Design

Naked sheathed heating elements. Support and housing are in stainless steel 304L. Explosion proof aluminum junction box IP66 (protection mode "Ex d") with cable gland included. These range of room radiators are supplied without any control thermostat.



Recommendations

This range of room radiators must be installed in horizontal position, fastened to the floor or on suitable brackets for wall mounting, without any device preventing a sustainable natural convection.

Special precautions must be taken to ensure a safe and appropriate use of this equipment.

Please consult us or read the instruction manual previously.

Manufacturing capabilities

Other Heating power and supply voltage.

Temperature class T4 (135°C)

Ambient temperature : -60 up to + 60°C

Accessories

Pair of protected steel brackets for wall mounting.
P/N. 6008-20 (weight 0,9 kg)

Power (+5/-10%)	Reference*			L (mm)	Weight (kg)
	230 V 1P	230 V 3P	400 V 3P		
600 W	6410.43	6410.53	6410.03	902	13
800 W	6410.45	6410.55	6410.05	1187	16
1200 W	6410.47	6410.57	6410.07	1687	24

*References depending on the supply voltage of the radiator: 230 V 1P, 230 V 3P or 400 V 3P

